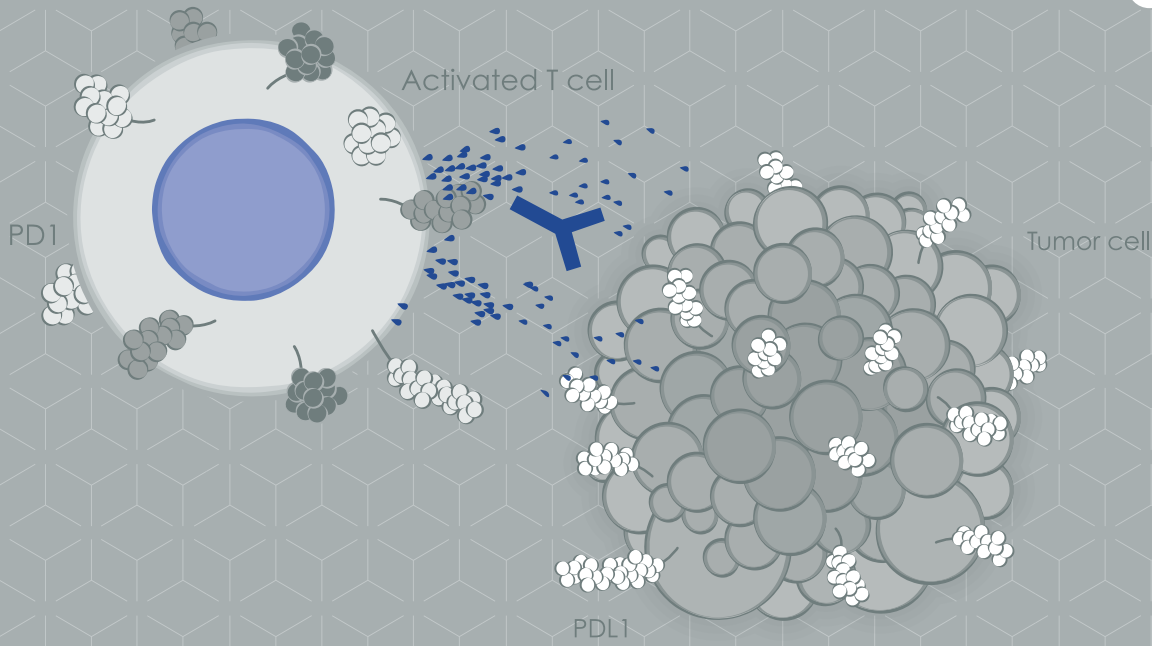


abcam



您要的 **PD-L1** 抗體
盡在 **abcam**



最新優惠訊息與詳細產品資訊，請洽Abcam台灣代理 — 伯森生技

伯森生技

網址 blossombio.com
客服 0800-059668

台北 (02) 2788-2121
台中 (04) 2323-3939

新竹 (037) 581-106
南部 (06) 235-6628



FDA批准

FDA批准上市的5個PD抑制劑藥物

Nivolumab (Opdivo)

Atezolizumab (Tecentriq)

Durvalumab (Imfinzi)

SP263

Pembrolizumab (Keytruda)

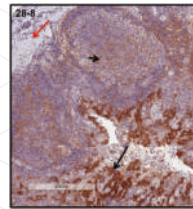
22C3

Avelumab (Bavencio)

FDA批准的PD-L1
抗體

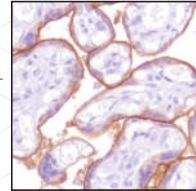
28-8
(ab205921)

SP142
(ab228462)



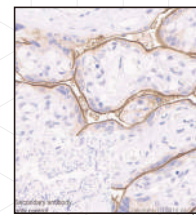
Anti-PD-L1 antibody [28-8]

Description: Rabbit monoclonal [28-8] to PD-L1
Application: Flow Cyt, ICC/IF, IHC-P, WB
Reactivity: Human
Conjugate: Unconjugated



Anti-PD-L1 antibody [SP142] - c-terminal

Description: Rabbit monoclonal [SP142] to PD-L1-C-terminal
Application: IHC-P
Reactivity: Human
Conjugate: Unconjugated



Anti-PD-L1 antibody [73-10] (ab228415)

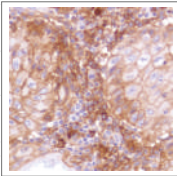
Description: Rabbit monoclonal [73-10] to PD-L1
Application: Flow Cyt, ICC/IF, IHC-P, IP, WB
Reactivity: Human
Conjugate: Unconjugated

合作開發

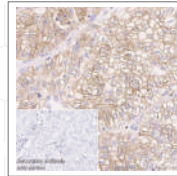
Abcam與Merck合作開發PD-L1抗體

73-10
(ab228415)

靈敏度高

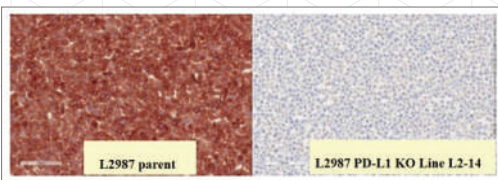


SP142, ab228462
1/100
human skin squamous
cell carcinoma tissue



73-10, ab228415
1/5000
human lung carcinoma tissue

專一性高

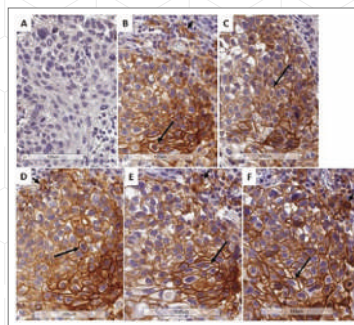


KO VALIDATED Recombinant RabMAb®

28-8, ab205921 剔除驗證

wide-type L2987 cell (left) and PD-L1 knockout L2987 cell (right)

批次間穩定



KO VALIDATED Recombinant RabMAb®

28-8, ab205921

Human Lung NSCLC tissue

All batches/lots (1,3,4,5,6) showed consistent results

A) Rabbit IgG, 5 µg/mL. No staining

B) Anti PD-L1, 2 µg/mL (ab205921 batch 1)

C) Anti PD-L1, 2 µg/mL (ab205921 batch 3)

D) Anti PD-L1, 2 µg/mL (ab205921 batch 4)

E) Anti PD-L1, 2 µg/mL (ab205921 batch 5)

F) Anti PD-L1, 2 µg/mL (ab205921 batch 6)

相關產品

Alexa Fluor®647 螢光抗體，請選 ab209960, Rabbit monoclonal [28-8] to PD-L1 (Alexa Fluor®647)

Mouse sample，請選 ab80276, Rat monoclonal [MIH6] to PD-L1 - Low endotoxin, Azide free

Simple step ELISA Kits，請選 ab214565, Human PD-L1 ELISA Kit [28-8]

WB應用，推薦 ab 213524, Rabbit monoclonal [EPR19759] to PD-L1

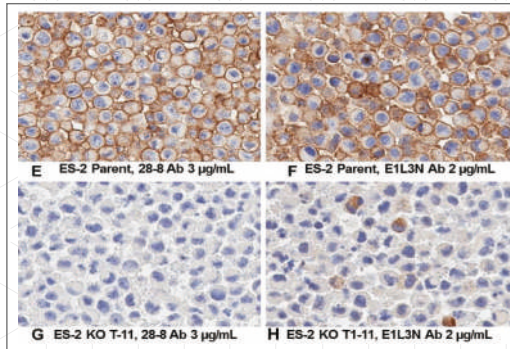
PD1，請選 ab137132, Rabbit monoclonal[EPR4877(2)] to PD1

PD-L2，請選 ab21107, Rat monoclonal[TY25] to PD-L2

比起其他相似抗體，abcam抗體具有更好的靈敏度與專一性

28-8 VS E1L3N

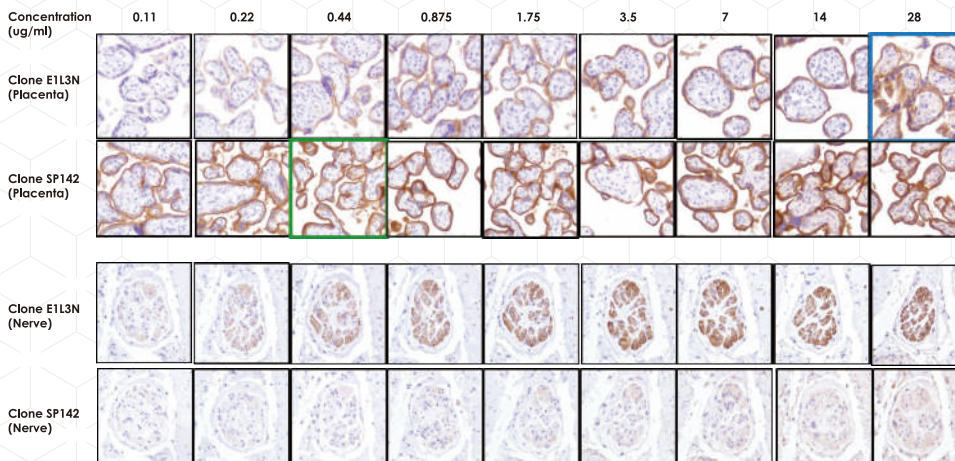
使用**28-8**檢測PD-L1的KO細胞株，沒有看到染色信號，即沒有非專一性結合，顯示了優越的專一性。
28-8(3 µg/ml)



使用**E1L3N**檢測PD-L1的KO細胞株，仍觀察到一些細胞質染色信號。
E1L3N(2 µg/ml)

Cogswell, J., et al., An Analytical Comparison of Dako 28-8 PharmDx Assay and an E1L3N Laboratory-Developed Test in the Immunohistochemical Detection of Programmed Death-Ligand 1. *Mol Diagn Ther*, 2017. 21(1): p. 85-93.

SP142 VS E1L3N



SP142(下) 在低濃度下就能得到很強的信號，靈敏度高。
[胎盤組織, E1L3N, 28 µg/ml (藍框); SP142, 0.44 µg/ml (綠框)]

使用E1L3N(上)對 negative control染色，可以看到非專一性訊號。而即使使用高濃度的SP142(下)染色的 negative control 仍然沒有出現非專一性訊號，顯示專一性較強。
(神經組織, E1L3N, SP142, 28 µg/ml)

Liao Z, Z.Y., Cai W, Zhang H, Alleman-Sposeto J, Smith S, et al., IHC performance of two rabbit anti-human PD-L1 monoclonal antibodies. Pleasanton: Spring Bioscience; 2014. <https://products.springbio.com/products/PD-L1-CD274-SP142-/M442>.

28-8實驗須知

*請注意，在手動免疫組織染色實驗中，請使用表格中所列出的抗原修復試劑和呈色系統。否則有可能得到不理想的實驗結果。

Item	Notes
使用濃度	2 - 7.5 µg/mL
對照抗體	Rabbit IgG, monoclonal [EPR25A] (ab172730)
抗原修復試劑	Universal HIER antigen retrieval reagent (ab208572)*
呈色系統	IHC detection kit HRP/DAB (ab209101)*
Positive Control	L2987 cell lines/CHO-PDL1 (Cell Lines: B-CPAP-high, ES-2-medium, HCC70-low)
Negative control	MCF-7 cell lines

自動免疫組織染色

Platform	Protocol
Dako	Dako Omnis
Leica	Leica BOND RX with on-line HIER
Roch	Ventana Ultra with on-line HIER
Bio Genex	BioGenex i6000 with off-line HIER

64% 生命科學研究人使用
Abcam 產品

50% 抗體文獻引用
Abcam



• 年度最佳抗體公司

抗體驗證最佳典範



• 產品銷向140多個國家

2017



客戶信賴的
轉譯後修飾抗體公司

2016

• 2016 神經科學領域傑出企業
• 2016 幹細胞研究傑出企業

生命科學行業數字媒體最佳
使用獎

2014

2013

• 英國‘最受尊敬企業’榮譽
• AIM‘年度企業’榮譽

abcam



最新優惠訊息與詳細產品資訊，請洽 Abcam 台灣代理 — 伯森生技

伯森生技網站 www.blossombio.com 伯森生技客服專線 (北部) 0800-059668 (南部) 0800-259988